



# Windows USB Driver Installation

## Required for Windows Users to perform firmware updates

The Windows version of the Firmware Updater requires drivers to be installed. There is a separate driver required for AVR-based and ARM-based products. Install one or both of the drivers depending on which product(s) you will be updating. Instructions for the driver installation are given below.

### Get Started

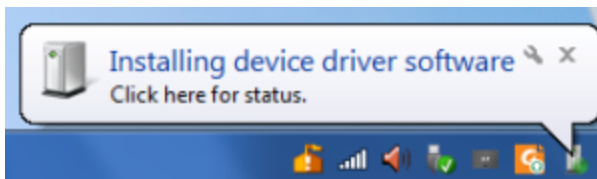
1. Download the Latest firmware for your module from the [support](#) page.
2. Unzip the downloaded zip file. It should contain four files:
  - a. Intellijel Firmware Updater.exe
  - b. usbtiny\_windowsxp7.zip
  - c. usbtiny\_windows8.zip
  - d. zadig\_2.2.exe
3. Follow the instructions below to install the driver(s) for your product(s).
4. Go back to where you extracted your download of the Firmware Updater and launch the app by double-clicking Intellijel Firmware Updater.exe
5. Continue to the Usage section below for instructions on how to upgrade your module firmware.

## Install the ARM STM32 Bootloader Drivers

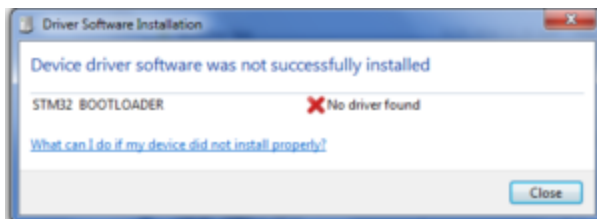
Applies to all newer modules with a USB port on the back of the module.

Once you have completed this procedure for your module, you will be able to update in the future without installing the drivers again.

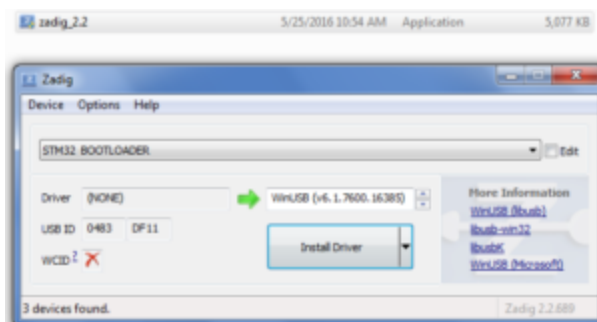
1. Open intellijel Firmware Updater.exe and select a module for the module-specific instructions on how to activate bootloader mode.
2. Connect a USB cable to your module and computer and start the module in bootloader mode using the instructions from Step 1.
3. Depending on your settings, Windows may indicate it's attempting to find a driver:



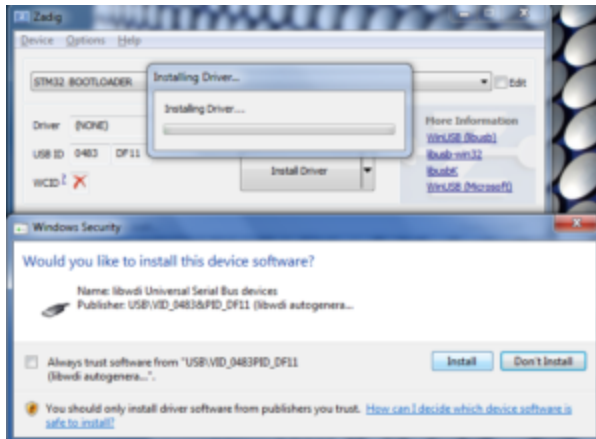
4. If you see this notification, you'll find that the driver installation fails:



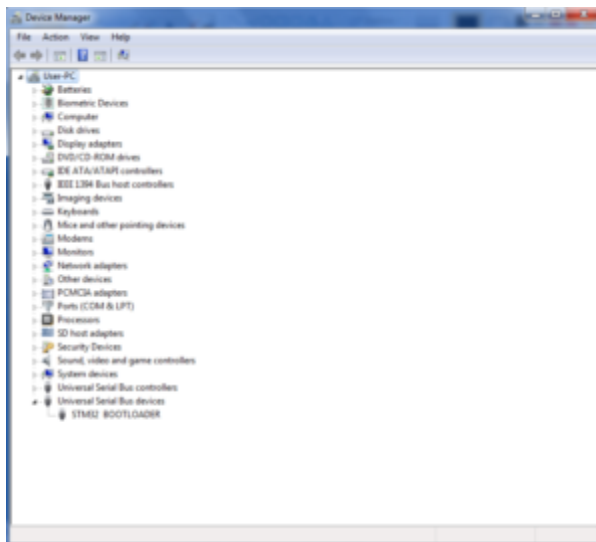
5. When it fails, or if you do not see a notification, double click on the zadig\_2.2.exe file which extracted from the downloaded zip file.
6. The driver installer software, "Zadig", will appear with the window as below. Ensure that the device "STM32 BOOTLOADER" is selected in the dropdown and that the driver is set to "WinUSB". Note that you may need to enable "List all devices" in the Zadig options to see the STM32 BOOTLOADER.



7. Click the large “Install Driver” button. You will be prompted to confirm the driver installation. Click the “Install” button:



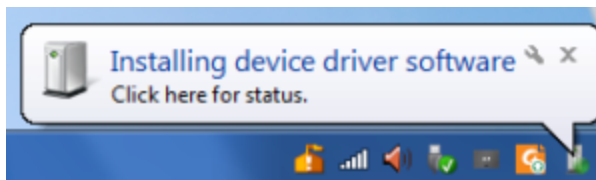
8. Windows will install the driver. If everything completes successfully you should see the “STM32 Bootloader” device appear in the “Universal Serial Bus devices” section of Device Manager.



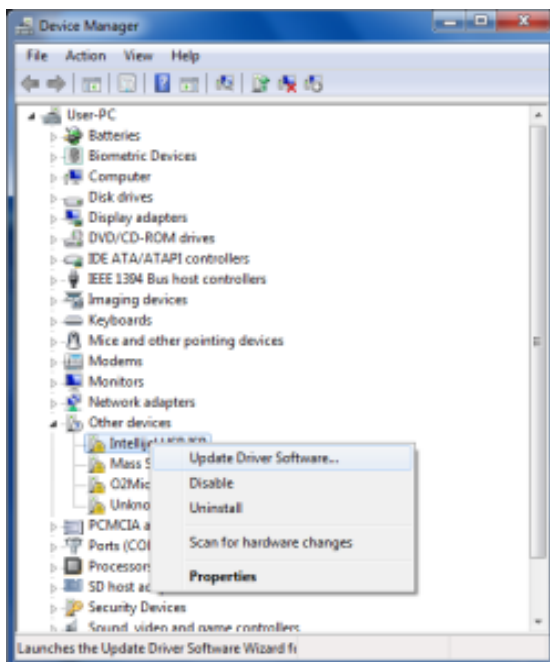
## Legacy AVR USB ISP driver

This driver is required for Metropolis, Mutamix, Plog,  $\mu$ Scale, or  $\mu$ Step only.

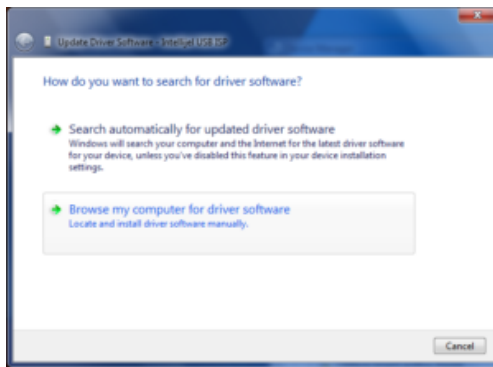
1. The zip files prefixed with usbtiny\_ contain the necessary drivers for the ISP. Depending on if you are on Windows XP/7 or Windows 8, unzip the corresponding zip file.
2. Connect the USB ISP to your computer's USB port. Windows will indicate it's attempting to install a driver.



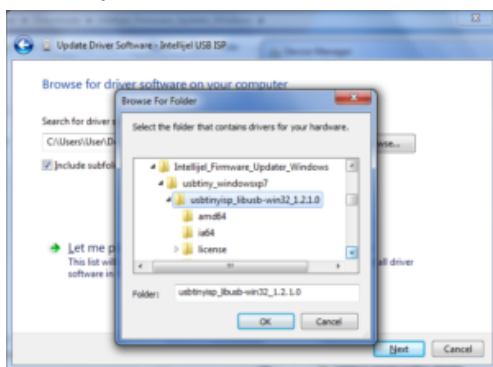
3. Go to the start menu and search for and launch "Device Manager"
4. In "Device Manager" under "Other devices" you should see a device named "Intellijel USB ISP" (or for some versions of the device, "FabISP"). Right click on the device and select "Update Driver Software..."



- From the next dialog select “Browse my computer for driver software”:



- Browse to the location where you extracted the zip file containing the driver and select the driver directory:



Click “Next”.

- Windows will install the driver. If everything completes successfully you should see a new category in “Device Manager” called “libusb-win32 devices” with a device called “USBtiny”. You’re now ready to use the Firmware Updater.

